

FRONT

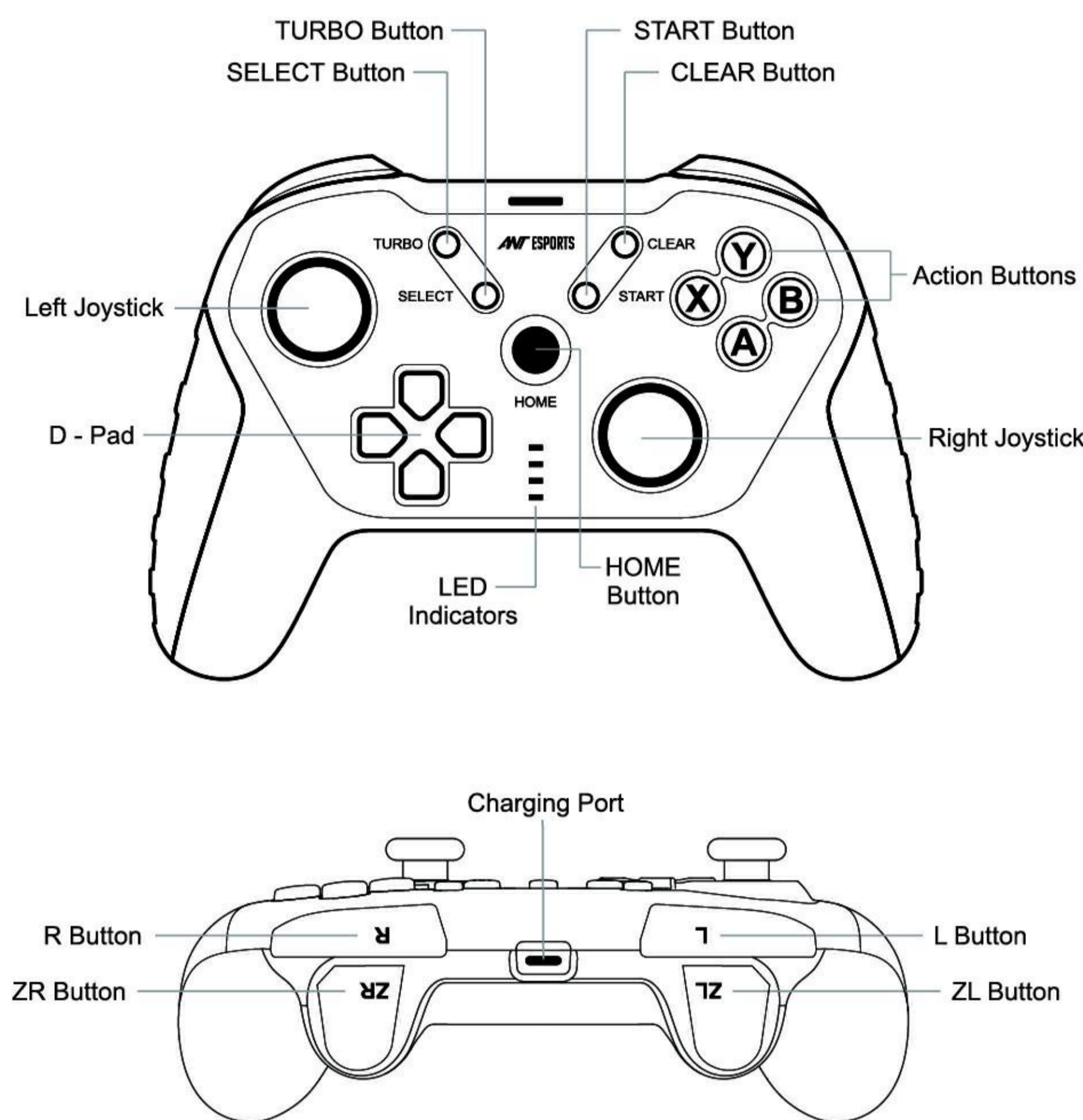
ANT ESPORTS GP310 WIRELESS GAMEPAD

User Manual & Warranty Card



Product Overview

Ant Esports GP310 Wireless Gamepad is a 2.4GHz gamepad supports PC, Ps3, Android TV Box, Android Mobile & PC360 Games, the max connecting range is 10m. And built-in rechargeable battery.



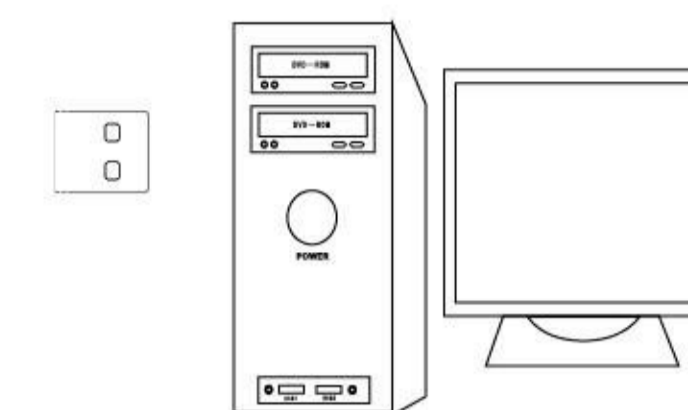
Download Support Driver: <http://antesports.com/pages/downloads>

Windows System Connection

The gamepad supports Win7/8/10 system, you should install the driver to support the Vibration, please follow the instructions to install the driver.

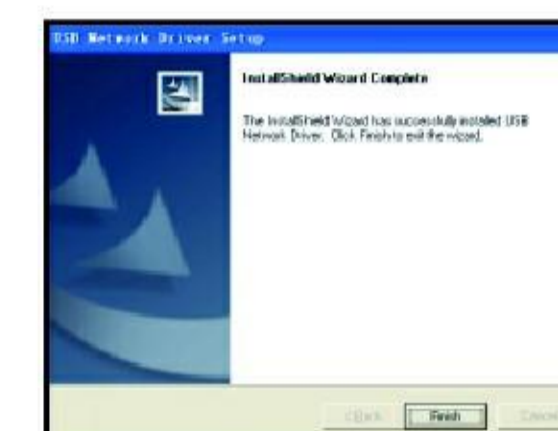
How To Use

Run the "Ant Esports GP310.exe" in the folder "6 in 1 wireless gamepad driver" to install the driver to your pc by following the instructions.



Ant Esports GP310.exe

Step 1

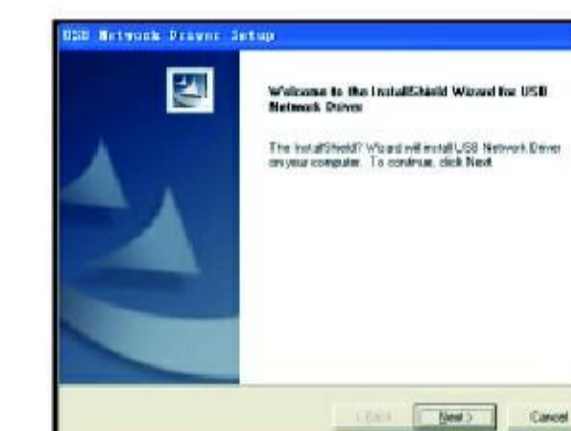


Step 3

Step 2



Step 4



Then your gamepad will support dual-vibration on your pc. After installing the driver, connect the receiver to your pc, power on the joystick. It is connected when the led indicator turns into light from flashing. Now run your game and start playing.

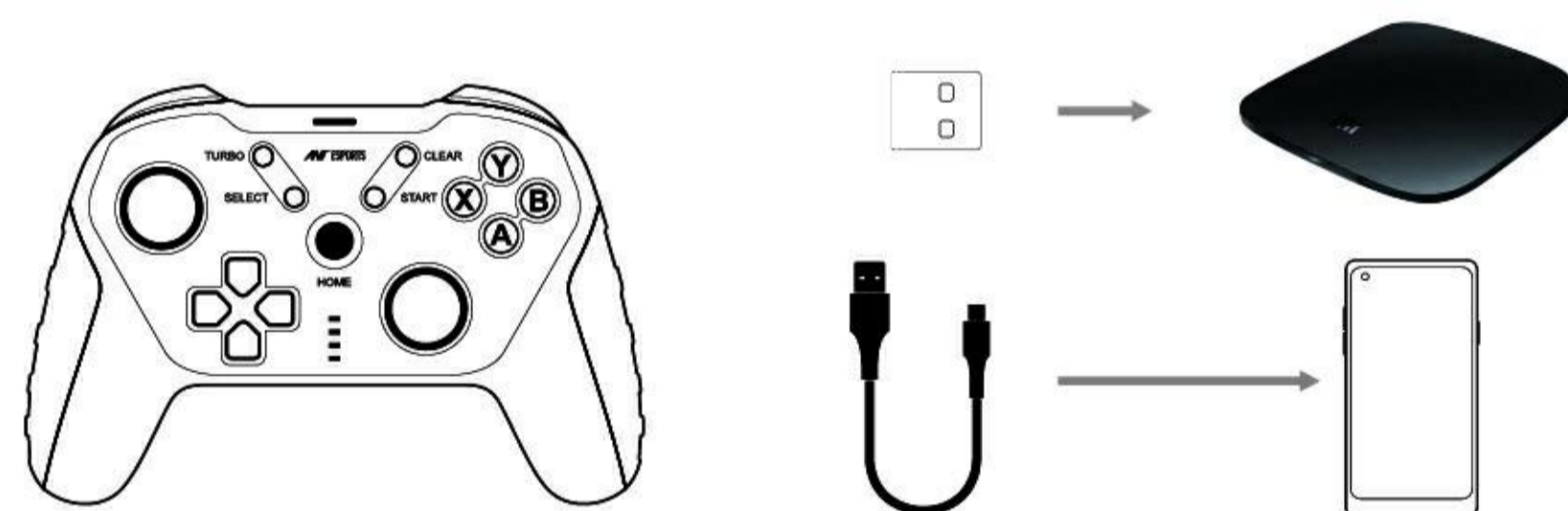
It will have 2 icons after completed.



BACK

Android Device Connection

Connect the USB Dongle to your android TV Box. Power on of the Gamepad. It is connected when the led turns light from flashing. You can download and install the Happy Chick Emulator from www.happychick.hk to your TV/TV BOX.



PC Mode Connection

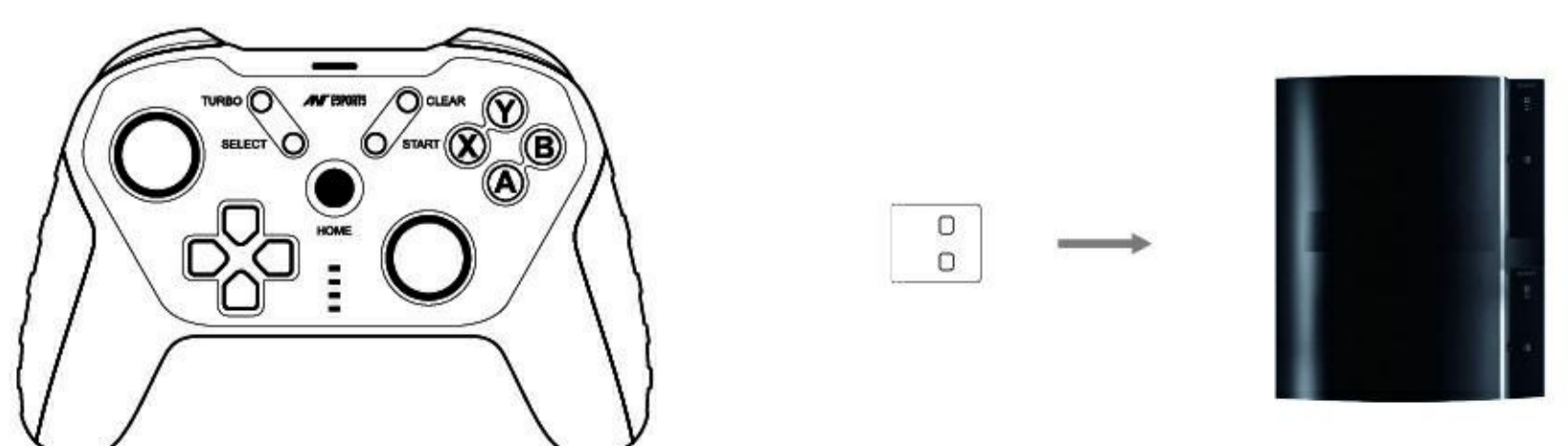
1. If your PC system is below Win 7, run the "Ant Esports GP310.exe" in the folder "PC360 test and vibration driver" to install the driver to your PC by following the instructions, then your gamepad will support X-input mode accordingly. After installing the software, connect the joystick to your PC, keep pressing MODE/Analog button for 5 seconds to shift to X-input mode and run your Xbox 360 games to play.

2. If your PC system is above Win 7, connect the joystick to your PC, shift to X-input mode and run your Xbox 360 games to play.

Note: The gamepad will turn to sleeping mode if there is no operation for 5 minutes after connection. Pressing START button can wake it up.

PS3 Connection

Connect the gamepad to PS3 console with the help of USB dongle. After the device gets recognized the controller, is ready to use.



Troubleshoot

Why the gamepad can not be identified on computer?

- Make sure your computer USB port is working.
- USB voltage is not stable because of short power supply of computer
- Try another USB port
- Need to install gamepad driver for your PC

Why the gamepad does not work in games?

- The game does not support gamepad.
- Set the gamepad mode in the game before using.

In The Box

Gamepad, USB to Type-C OTG Connector, Charging Cable, USB Dongle, User Manual

Warranty

Ant Esports GP310 Wireless Gamepad Comes With 1 Year International Warranty.

Warranty Card

Customer Name : _____
Product Name : _____ Model No.: _____
Address: _____ Date of Purchase: _____
Dealer Name : _____ Phone No.: _____

CONNECT WITH US ON

ANT ESPORTS
www.antesports.com
support@antesports.com

*Notice: Any alteration of the clauses and contents and copies are invalid.

*All product names, logos, and brands are property of their respective owners. All company, product and service names used here are for identification purposes only. Use of these names, logos, and brands does not imply endorsement.